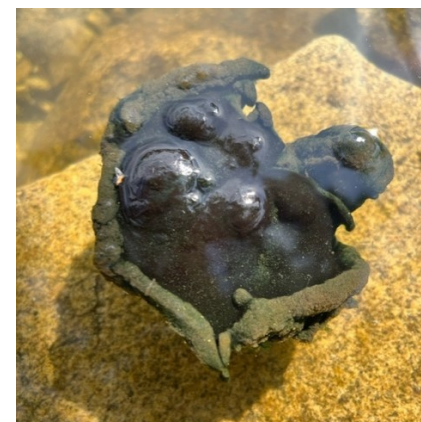


# WHAT YOU NEED TO KNOW ABOUT CYANOBACTERIA

## Stay safe and healthy in New Hampshire's lakes

Cyanobacteria blooms can make people, pets, and wildlife sick. Stay safe by knowing what to look for and how to respond. If something doesn't look right, then it could be a dangerous toxic bloom. **Stay out and report it!**

**Here are just some of the ways a toxic bloom could look:**



Cyanobacteria blooms can look like these pictured on this card, but can appear in many different shapes, forms, and colors.



17 Chenell Drive, Suite One, Concord NH 03301  
603.226.0299 [nhlakes.org](http://nhlakes.org)  
Working together for the lakes we all love.



# YOU CAN HELP REPORT CYANOBACTERIA BLOOMS

## What to do if think you've seen a bloom:

- **Act fast!** Bloom conditions can change quickly.
- Take several pictures of the suspected bloom.
- Use the NHDES Cyano Reporting Form at <https://arcg.is/1e8Tfy> (or use the QR Code below). Include photos, lake name, and the general location of the bloom.

## Follow these steps to minimize immediate risks:

- Don't wade or swim or drink the water.
- Keep kids, pets, and livestock out of the water.
- If anyone comes in contact with a bloom or scum (including pets), they should rinse off with fresh water as soon as possible.

## What happens when a bloom is identified:

- If cyanobacteria densities exceed a certain amount, NHDES will issue a public health advisory telling people and pets to stay out of the water.
- When cyanobacteria densities subside, NHDES will remove the advisory.

## Stay informed

Sign-up to receive cyanobacteria advisories. NHDES posts public health advisories when cyanobacteria counts are higher than the state standards. Sign up at [bit.ly/CyanobacteriaAlerts](https://bit.ly/CyanobacteriaAlerts) (choose the **Beach Advisories email list**).

NH LAKES works in coordination with The New Hampshire Department of Environmental Services (NHDES), local organizations, and the public to monitor our lakes for cyanobacteria blooms.



**REPORT IT!**

