

All of these algae are considered common in northern freshwaters.



Figure 1: Asterionella

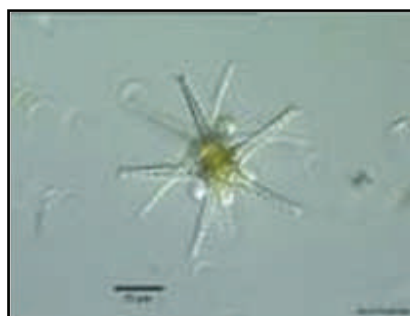


Figure 5: Staurastrum



Figure 2: Cyclotella

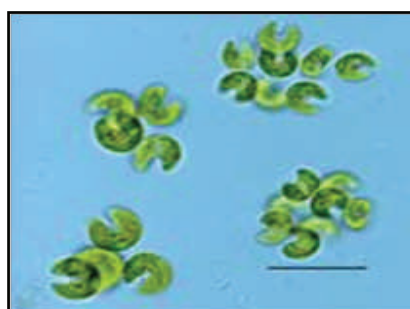


Figure 6: Quadrigula



Figure 3: Chrysophaerella



Figure 7: Pandorina



Figure 4: Dinobryon

Photo credits:

Asterionella: [www.fli.hws.edu/sos/plankton/asterionella2.jpg](http://www.fli.hws.edu/sos/plankton/asterionella2.jpg)

Cyclotella: [www.biolib.cz/IMG/GAL/12729.jpg](http://www.biolib.cz/IMG/GAL/12729.jpg)

Chrysophaerella: [www.keweenawalgae.mtu.edu/ALGAL\\_IMAGES/chryso](http://www.keweenawalgae.mtu.edu/ALGAL_IMAGES/chryso)

Dinobryon: [www.microscopy-uk.org.uk/.../dinobryon.jpg](http://www.microscopy-uk.org.uk/.../dinobryon.jpg)

Staurastrum: [www.keweenawalgae.mtu.edu/.../charophyceae.htm](http://www.keweenawalgae.mtu.edu/.../charophyceae.htm)

Quadrigula: [homepage2.nifty.com/nyanpu-/algae2-8.htm](http://homepage2.nifty.com/nyanpu-/algae2-8.htm)

Pandorina: <http://www.dr-ralf-wagner.de/changelog.html>