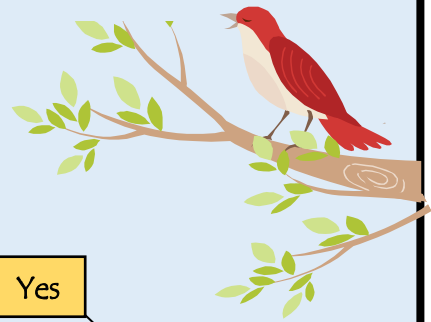


If you find Baby Songbird out of the nest ~



Is it visibly injured or did another animal get at it?

Yes

Contact a licensed wildlife rehabilitator or wildlife care center.

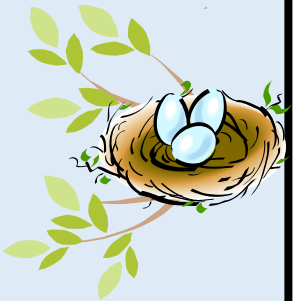
No

What does it look like?

Eyes not open yet..

Eyes open; feathers are few and may be in tube-like sheaths

Feathered; awkwardly hops or flutters; tail & wings short.



You have a hatchling. It's very young.

You have a nestling.

You have a fledgling.

Can you see the nest?

Is it in immediate danger?

Yes

No

No

Yes

Return the bird to its nest; fear not, the parents won't "smell" you on the baby.

Make a nest from a basket & dried grasses. Wire it firmly to a tree where you found it.

Do not intervene!! Though it looks awkward, it's a natural step. The bird needs privacy and the parents are still feeding it.

Move it to a safer spot nearby.

